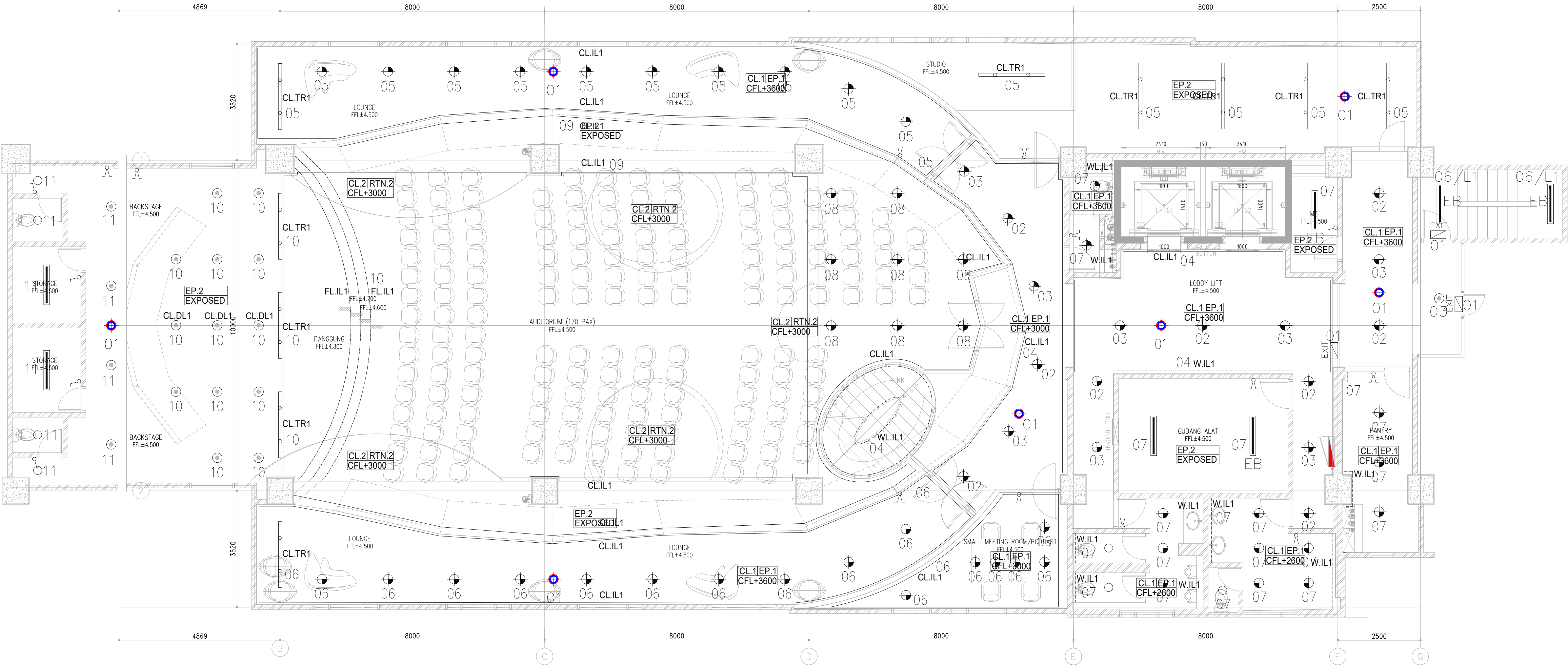




KETERANGAN :

○	DOWNLIGHT LED OUTBOW-BOX 10 W
⊙	DOWNLIGHT LED OUTBOW-BOX 20 W
EXIT	LAMPU EXIT LED 3 W
+	NICAD BATTERY
●	DOWNLIGHT LED OUTBOW-BOX 15 W
	+NICAD BATTERY, BACKUP 2 JAM
—	TKO LED 1x20 W
—	TKO LED 2x20 W
EB	+NICAD BATTERY, BACKUP 2 JAM
↗	SAKLAR TUNGGAL
↘	SAKLAR SERI
CL.HL1	HANGING LED STRIP 15W/M REF. BY SPECIAL LIGHTING
CL.LI1	INDIRECT LED STRIP 15W/M REF. BY SPECIAL LIGHTING
W.LI1	WALL LAMP INDIRECT 15W/M REF. BY SPECIAL LIGHTING
FL.LI1	INDIRECT FLOOR LED 15W/M REF. BY SPECIAL LIGHTING
CL.TR1	TRACK LAMP LED 2x5W REF. BY SPECIAL LIGHTING
FL.UP1	FLOOR UPLIGHT 10 W REF. BY SPECIAL LIGHTING
CL.DL1	DOWNLIGHT 20 W REF. BY SPECIAL LIGHTING
CL.HL2	HANGING SPOTLIGHT 15 W REF. BY SPECIAL LIGHTING



<div>OWNER/CLIENT</div> <div></div> <div>APPROVED : .../.../...</div> <div><div>..... (name)</div><div>..... (position)</div><div>..... (Dep./Div.)</div></div> <div>(signed)</div>	<div>PROJECT</div> <div>BPDP KELAPA SAWIT</div> <div>Jl.Medan Merdeka Tim, RT.7/RW.1, Gambir, Kec. Gambir, Kota Jakarta Pusat, Daerah Khusus Ibukota Jakarta 10110</div>	<div>INTERIOR DESIGN CONSULTANT</div> <div>PT. MADEA AGKASAMA</div> <div>Jl. Hati Suci No. 4 Gd. Sakura Lt. 2 Room 201 Kel. Kampung Bali, Kec. Tanah Abang, Jakarta Pusat Telp. 021 - 2303483 , Fax. 021 - 2303483</div> <div>APPROVED : //</div>	<div>MEP CONSULTANT</div> <div></div> <div>PT.DUTA PRATAMA ENGINEERING MECHANICAL &amp; ELECTRICAL ENGINEER</div> <div>Rukan Taman Meruya Blok M No. 37, Jl. Batu Mulia No. 1 Meruya Utara Kembangan - Jakarta Barat 11620 Phone : 021-5845546, 5845547, 5845556, Fax : 021-58474531 Email : dpept.me@gmail.com, pt.dpe.me@yahoo.com</div>	DRAWING TITLE	<div>△</div> <div>...</div> <div>.../.../...</div>	DRAWN	DRAWING NUMBER
				DENAH INSTALASI PENERANGAN LANTAI 1	<div>△</div> <div>...</div> <div>.../.../...</div>	Sangaji	EL-202
					<div>△</div> <div>...</div> <div>.../.../...</div>	DATE : 15/05/24	
					<div>△</div> <div>...</div> <div>.../.../...</div>	CHECKED	PAGE
					<div>△</div> <div>...</div> <div>.../.../...</div>	Jefri	
				SCALE : 1:150	<div>△</div> <div>...</div> <div>.../.../...</div>	DATE : 15/05/24	
ALL MEASUREMENT MUST BE CHECKED AT BY SITE BY THE CONTRACTORS AND ANY DIFFERENCES REPORTED/INITIATED TO THE DESIGNER FOR CLARIFICATION BEFORE PROCEEDING.	<div>△</div> <div>...</div> <div>.../.../...</div>	DRAWING FOR		DATE : 2024/05/10			
#	REVISION :	DATE	TENDER				